

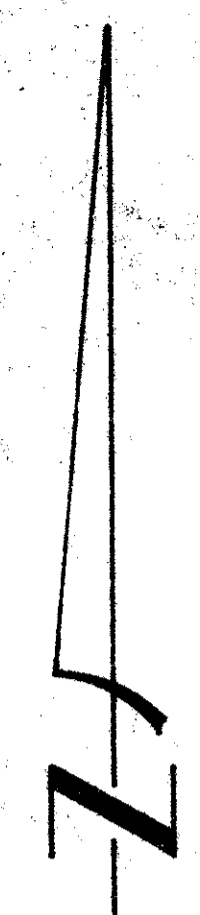
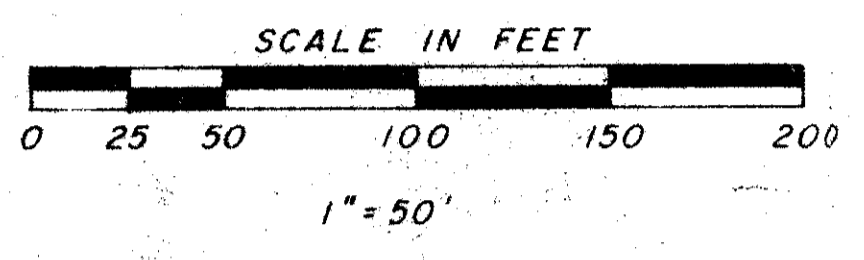
55/86

86

KINGS POINT PLAT NO. EIGHT

A PART OF THE S. E. 1/4 OF SECTION 23
TOWNSHIP 46 SOUTH, RANGE 42 EAST
PALM BEACH COUNTY, FLORIDA

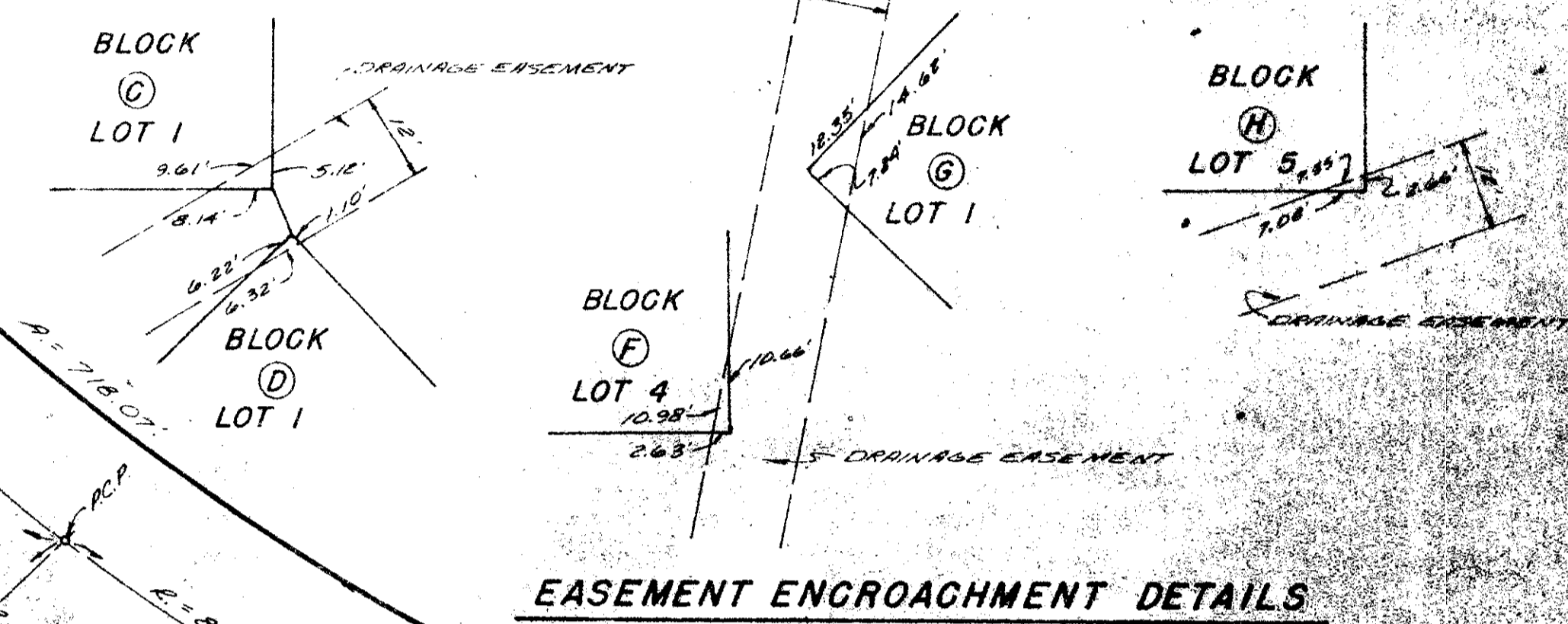
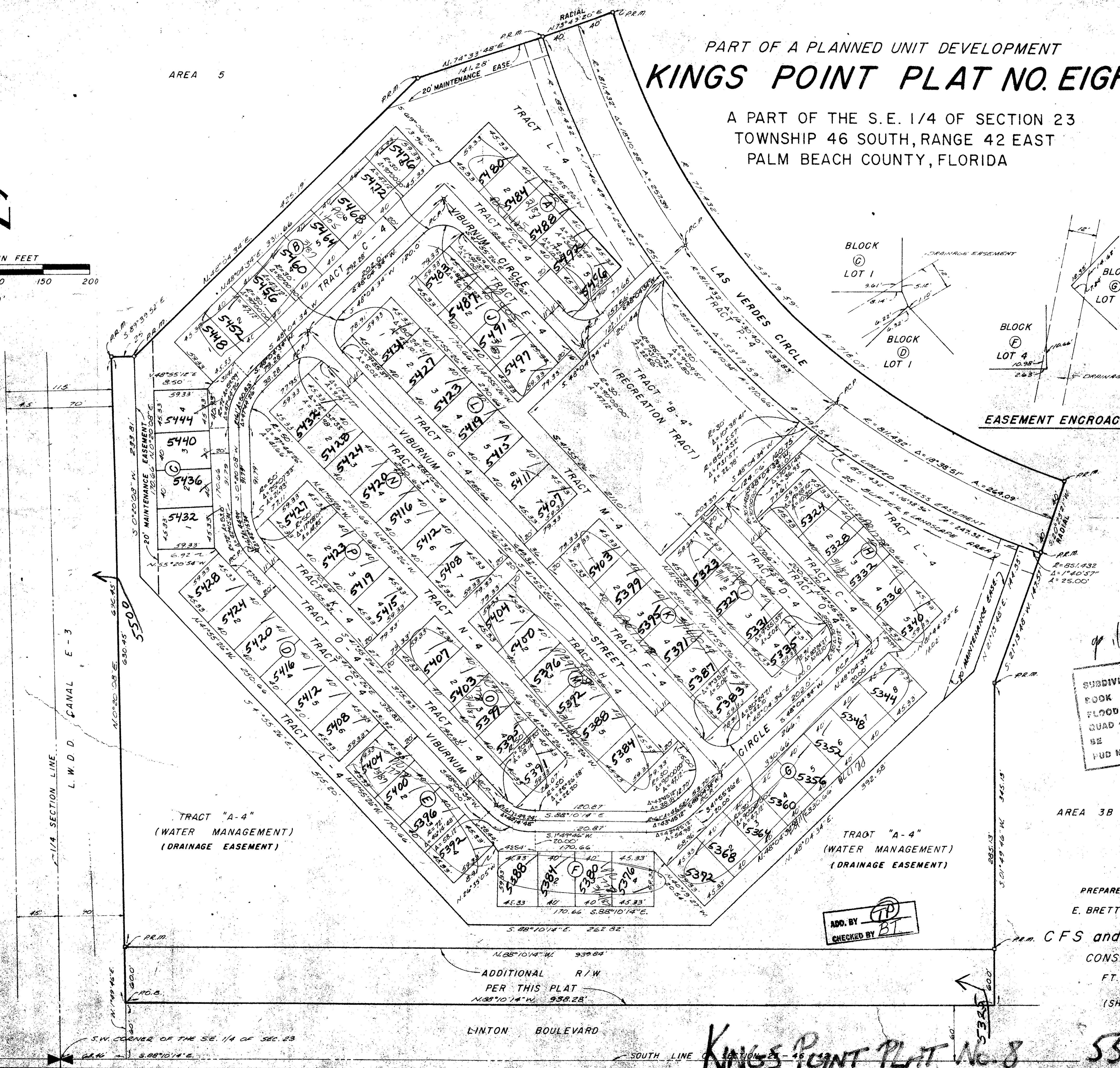
AREA 5



DRAWING NUMBER

DRAWING NUMBER

DRAWING NUMBER



9/12/87 23/46/42
SUBDIVISION - Kings Point
BOOK 55 PAGE 86
FLOOD ZONE B FLOOD MAP # 2200
QUAD # 37 ZONING
SE ZIP CODE 33445
PUD NAME Plat 8

AREA 3B

PREPARED BY:
E. BRETT CULPEPPER
CFS and ASSOCIATES, INC
CONSULTING ENGINEERS
FT. PIERCE, FLORIDA
(SHEET 2 OF 2)

ADD. BY [Signature]
CHECKED BY [Signature]

KINGS POINT PLAT NO. 8 55/86 0263-005